

QUE door

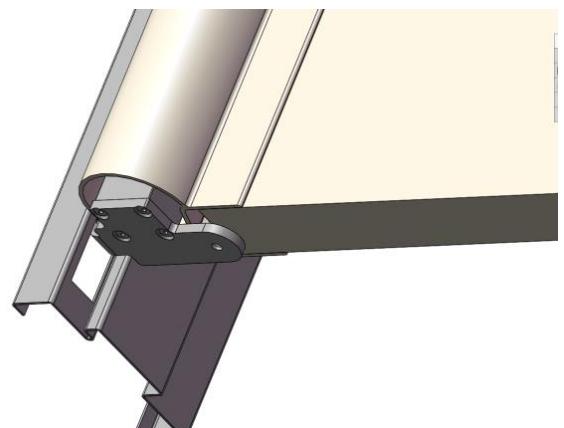
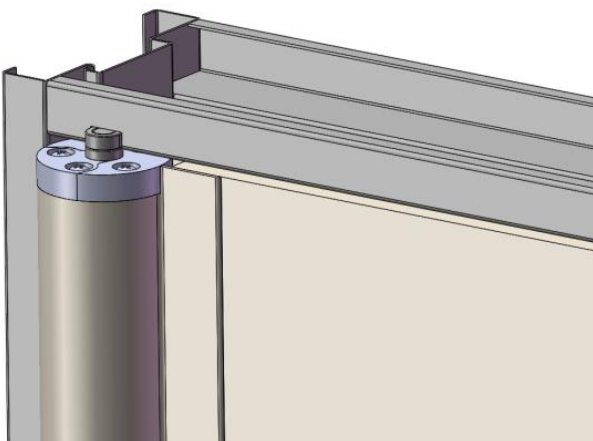
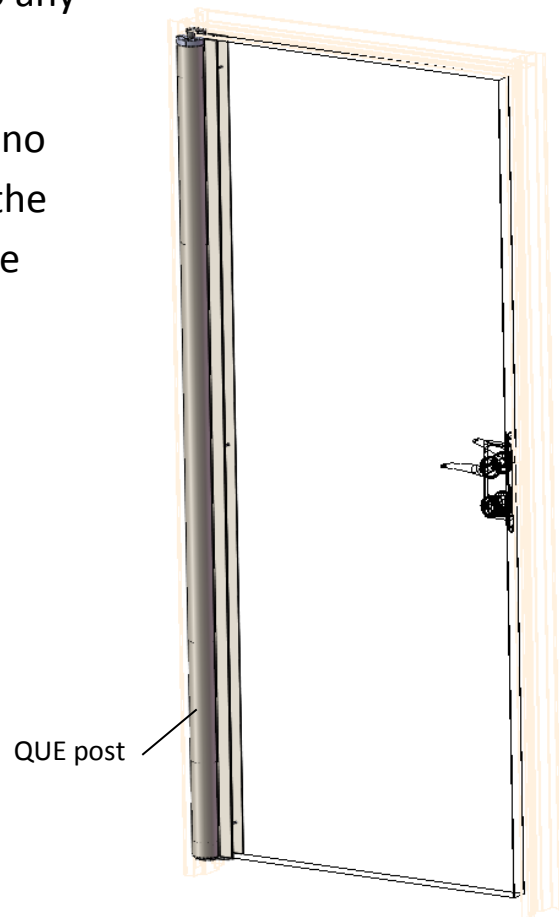
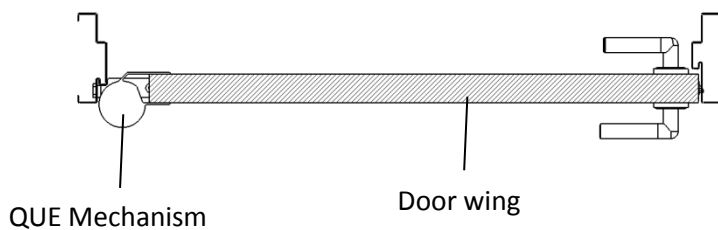
Technical data



Product description

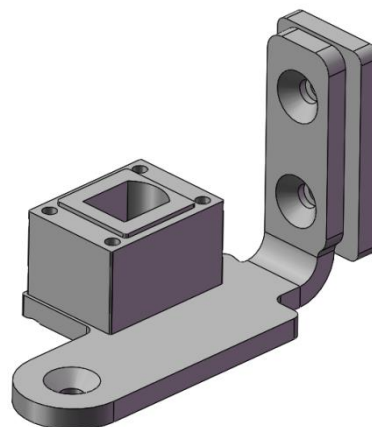
The Que mechanism is a safety door hinge, which can be adapted into any door frame and door wing.

The Que mechanism makes sure no finger could be caught between the door and the door frame on hinge side.

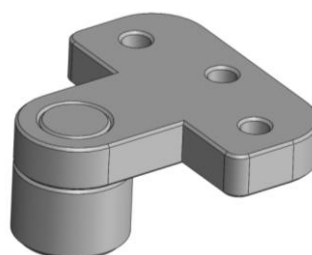
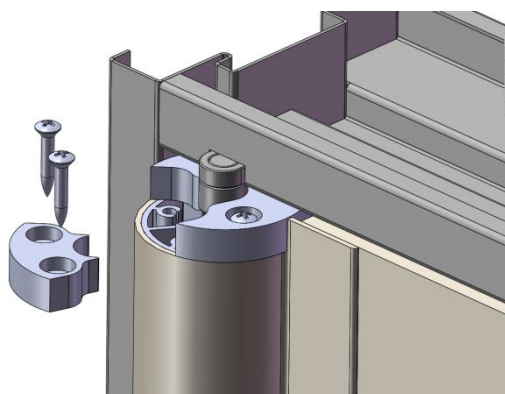


Product description cont'

Lower bracket detail:



Upper bracket and installation detail:



Product description cont'

Door braking mechanism:

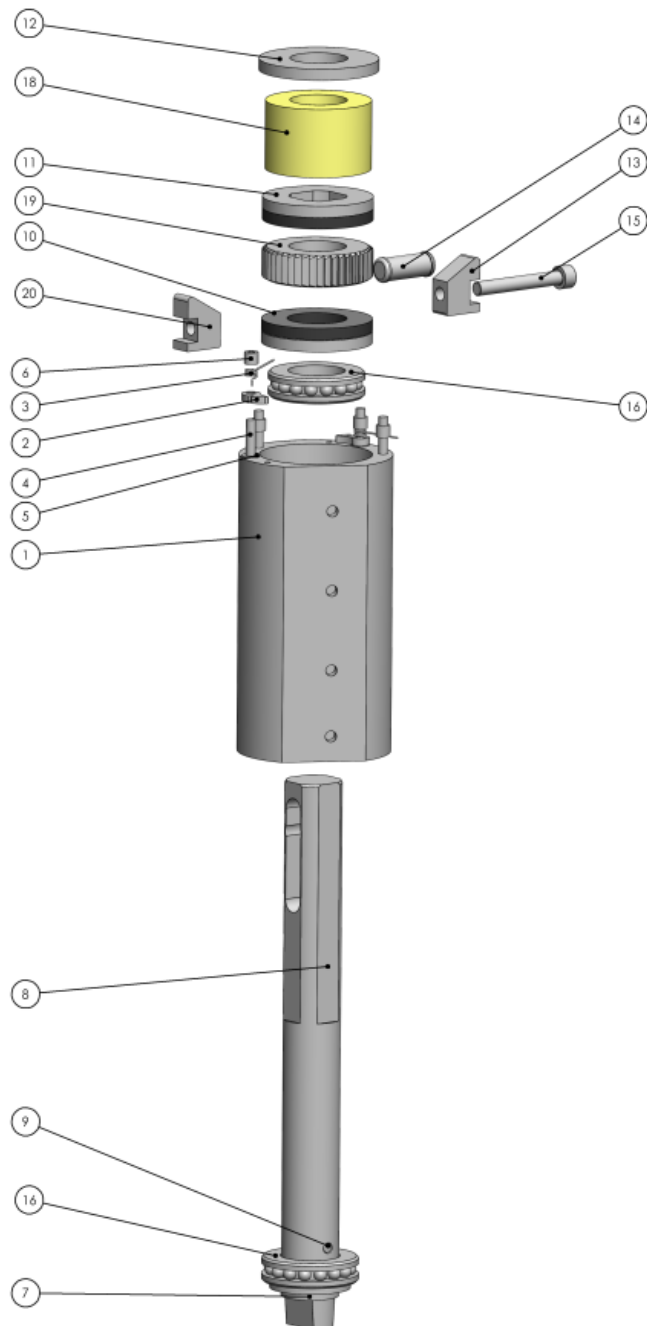
The mechanism allows the door to open freely, but slows it while shutting. The braking force is adjustable.

Parts list:

1. Aluminum body
2. One way latch
3. Retaining spring
4. Steel pin
5. Washer
6. Plastic sleeve
7. Bracket
8. Shaft
9. Pin
10. Lower brake pad
11. Upper brake pad
12. Washer
13. Wedge
14. Pin
15. Screw
16. Thrust bearing
17. –
18. Fibro rubber spring
19. Ratchet gear
20. Threaded wedge

The mechanism can be adapted

To LH/RH doors.



Dimensions:

QUE post aluminum profile

