

# Door wheel

Product technical data

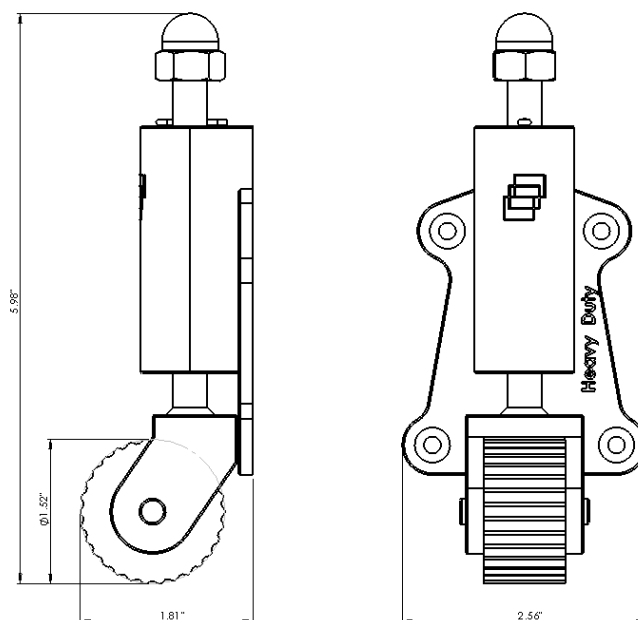
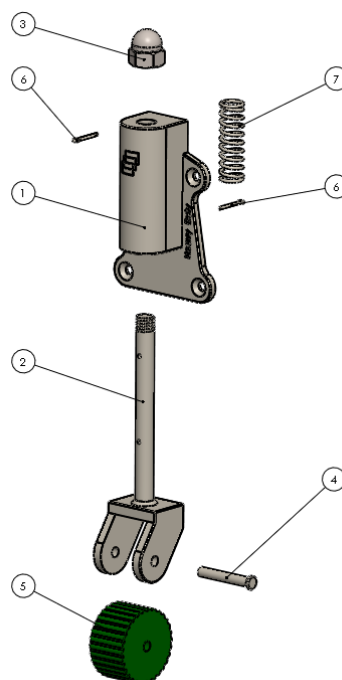


## Product description

### Parts list:

1. Body
2. Wheel carrier
3. Cap nut
4. Rivet
5. Rubber wheel
6. Split pin

Body and wheel carrier are made of chrome plated Zamak.



## Installation instructions

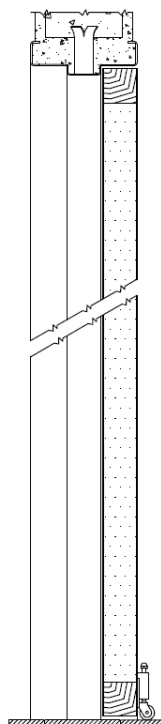


Fig. 1

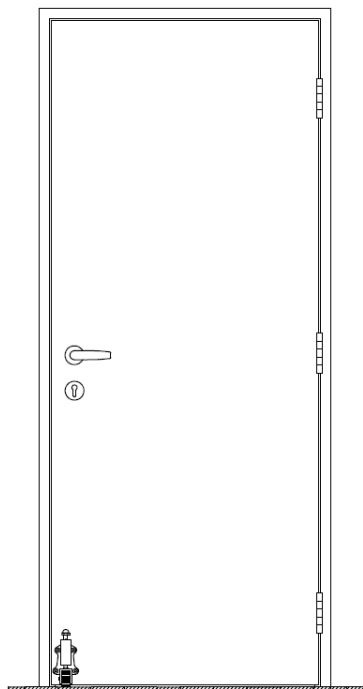


Fig. 2

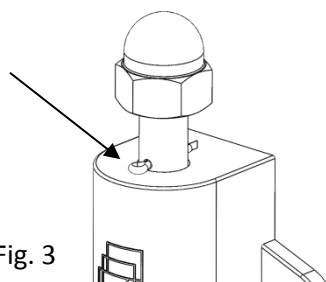


Fig. 3

1. Open the door to 90° position.
2. Place the wheel on the desired installation area so that the wheel touches the floor.
3. Mark the height of the product's body top on the door.
4. Close the door and attach the product to the door, according to height mark, using supplied screws.
5. Pull the split pin (marked with arrow on Fig.3) out, to release the spring.